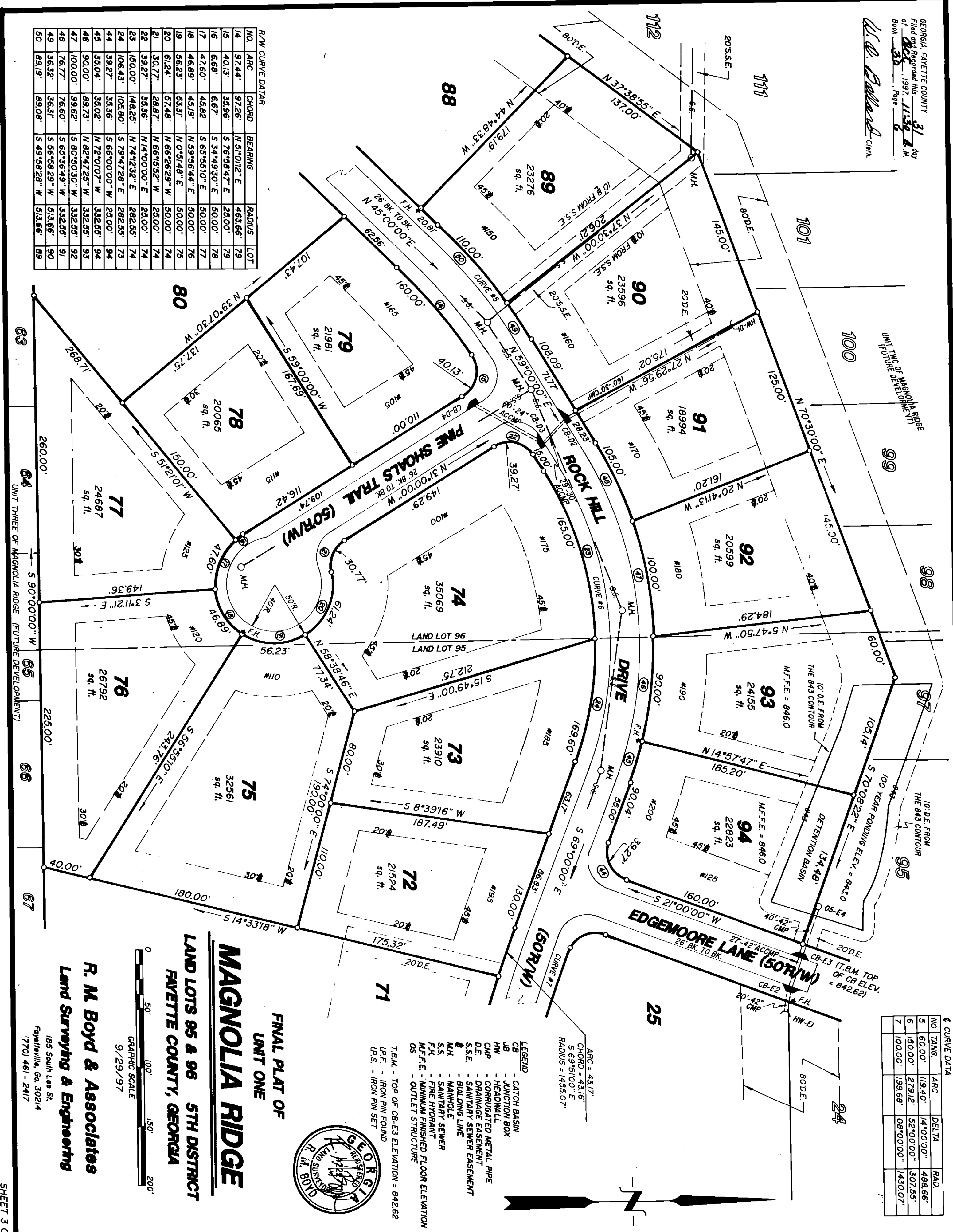


GEORGIA, FAYETTE COUNTY
 Filed and Recorded this 31 day
 of Dec., 1997, 1139 A.M.
 Book 30, Page 6
 W. B. Boyd, Clerk

R/W CURVE DATA

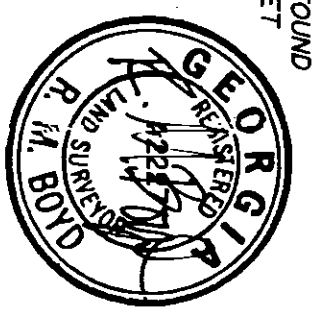
NO.	ARC	CHORD	BEARING	RADIUS	LOT
14	97.44'	97.26'	N 51°01'2" E	463.66'	79
15	40.13'	35.96'	S 76°58'47" E	250.00'	79
16	6.68'	6.67'	S 34°49'30" E	50.00'	78
17	47.60'	45.82'	S 65°55'10" E	50.00'	77
18	46.89'	45.19'	N 59°56'44" E	50.00'	76
19	56.23'	53.31'	N 0°51'48" E	50.00'	75
20	61.24'	57.48'	N 66°26'29" W	50.00'	74
21	30.77'	28.87'	N 66°15'52" W	25.00'	74
22	39.27'	35.36'	N 14°00'00" E	25.00'	74
23	150.00'	148.25'	N 74°12'32" E	282.55'	74
24	106.43'	105.80'	S 79°47'28" E	282.55'	73
44	39.27'	35.36'	S 66°00'00" W	25.00'	94
45	35.04'	35.02'	N 72°01'07" W	332.55'	94
46	90.00'	89.73'	N 82°47'25" W	332.55'	93
47	100.00'	99.62'	S 80°50'30" W	332.55'	92
48	76.77'	76.60'	S 65°56'49" W	332.55'	91
49	36.32'	36.31'	S 56°58'29" W	513.66'	90
50	89.19'	89.08'	S 49°56'28" W	513.66'	89



CURVE DATA

NO	TANG.	ARC	DELTA	RAD.
5	60.00'	119.40'	14°00'00"	488.66'
6	150.00'	279.12'	52°00'00"	307.55'
7	100.00'	199.68'	08°00'00"	1430.07'

LEGEND
 CB - CATCH BASIN
 JB - JUNCTION BOX
 HW - HEADWALL
 CMP - CORRUGATED METAL PIPE
 D.E. - DRAINAGE EASEMENT
 S.S.E. - SANITARY SEWER EASEMENT
 B.L. - BUILDING LINE
 M.H. - MANHOLE
 S.S. - SANITARY SEWER
 F.H. - FIRE HYDRANT
 M.F.F.E. - MINIMUM FINISHED FLOOR ELEVATION
 O.S. - OUTLET STRUCTURE
 T.B.M. - TOP OF CB-E3 ELEVATION = 842.62
 I.P.F. - IRON PIN FOUND
 I.P.S. - IRON PIN SET



FINAL PLAT OF
 UNIT ONE
MAGNOLIA RIDGE
 LAND LOTS 95 & 96 5TH DISTRICT
 FAYETTE COUNTY, GEORGIA
R. M. Boyd & Associates
 Land Surveying & Engineering
 185 South Lee St.
 Fayetteville, Ga. 30214
 (770) 461-2417